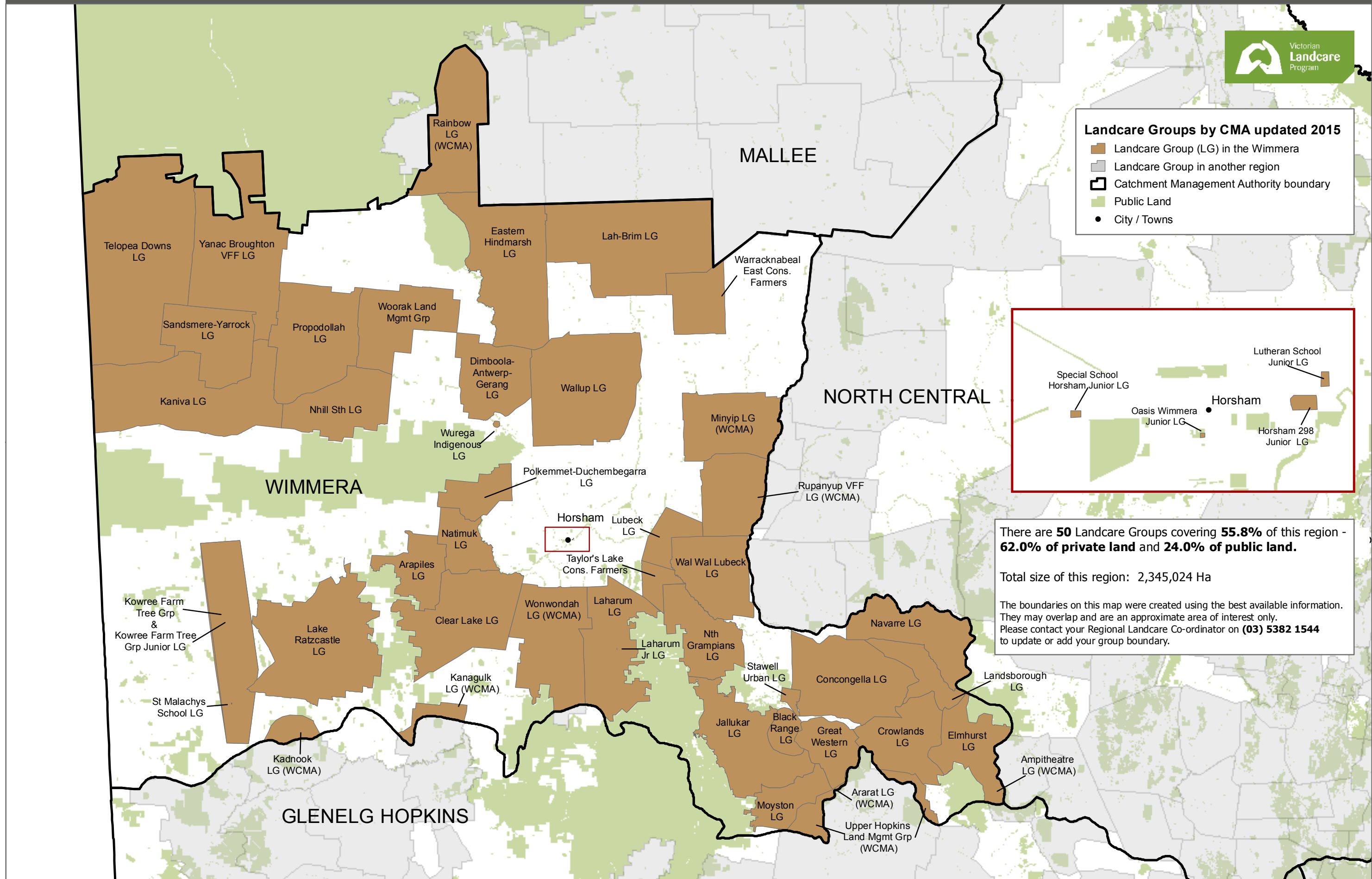


Landcare Groups in the Wimmera region



Landcare Groups by CMA updated 2015

- Landcare Group (LG) in the Wimmera
- Landcare Group in another region
- Catchment Management Authority boundary
- Public Land
- City / Towns



There are **50** Landcare Groups covering **55.8%** of this region - **62.0%** of private land and **24.0%** of public land.

Total size of this region: 2,345,024 Ha

The boundaries on this map were created using the best available information. They may overlap and are an approximate area of interest only. Please contact your Regional Landcare Co-ordinator on **(03) 5382 1544** to update or add your group boundary.

All base layers shown on this map are sourced from the DELWP Corporate Spatial Data Library from various scales. Landcare group data updated in 2014 & 2015.

