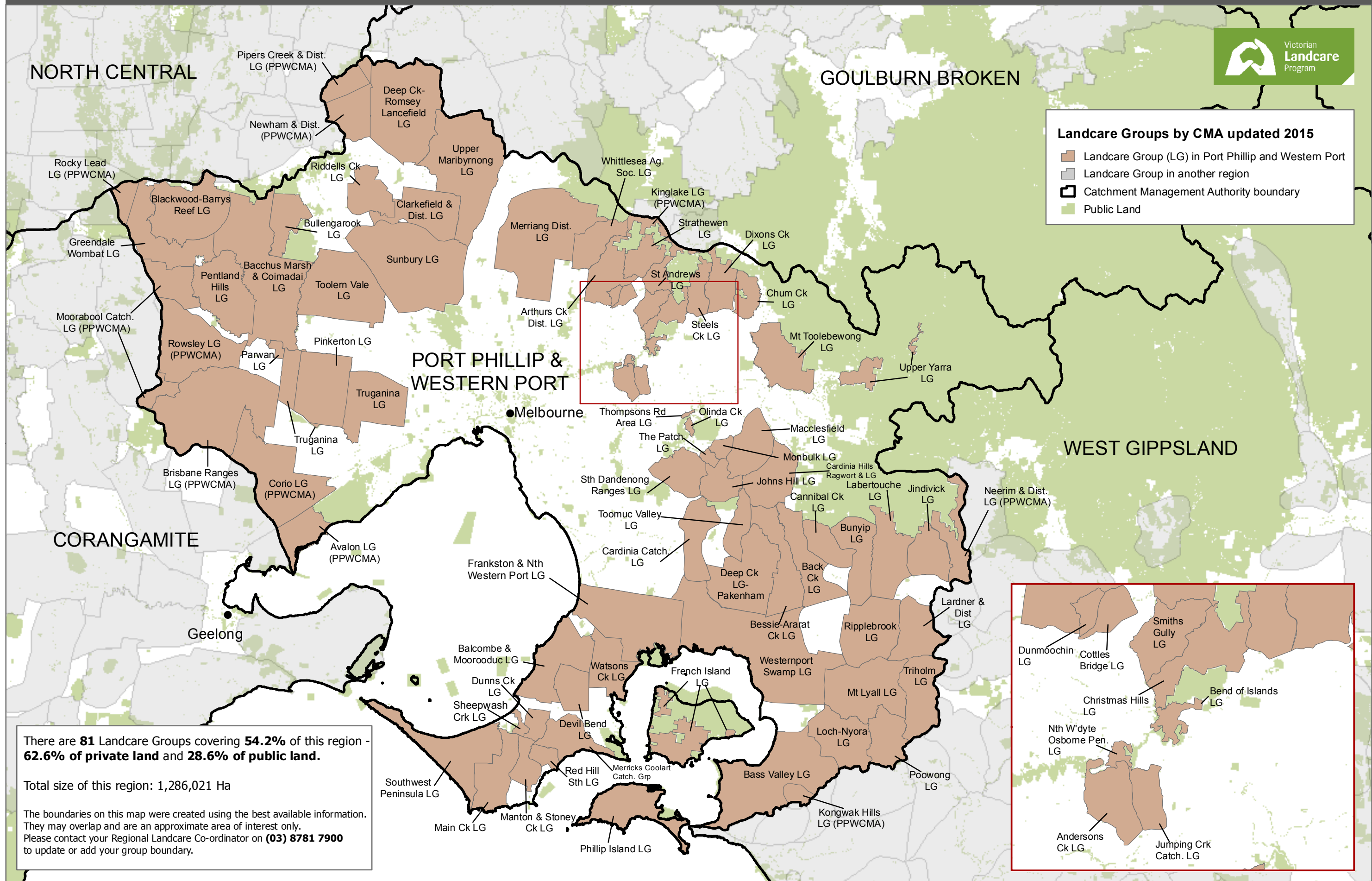


Landcare Groups in the Port Phillip and Western Port region



Landcare Groups by CMA updated 2015

- Landcare Group (LG) in Port Phillip and Western Port
- Landcare Group in another region
- Catchment Management Authority boundary
- Public Land

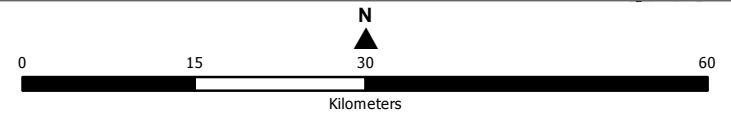


There are **81** Landcare Groups covering **54.2%** of this region - **62.6%** of private land and **28.6%** of public land.

Total size of this region: 1,286,021 Ha

The boundaries on this map were created using the best available information. They may overlap and are an approximate area of interest only. Please contact your Regional Landcare Co-ordinator on **(03) 8781 7900** to update or add your group boundary.

All base layers shown on this map are sourced from the DELWP Corporate Spatial Data Library from various scales. Landcare group data updated in 2014 & 2015.



© The State of Victoria, Department of Environment, Land, Water and Planning (DELWP), 2015. <http://www.delwp.vic.gov.au>
Map created on 16 October 2015.

Cartography by the EIS Unit (KDS). SIS_2015_1136

