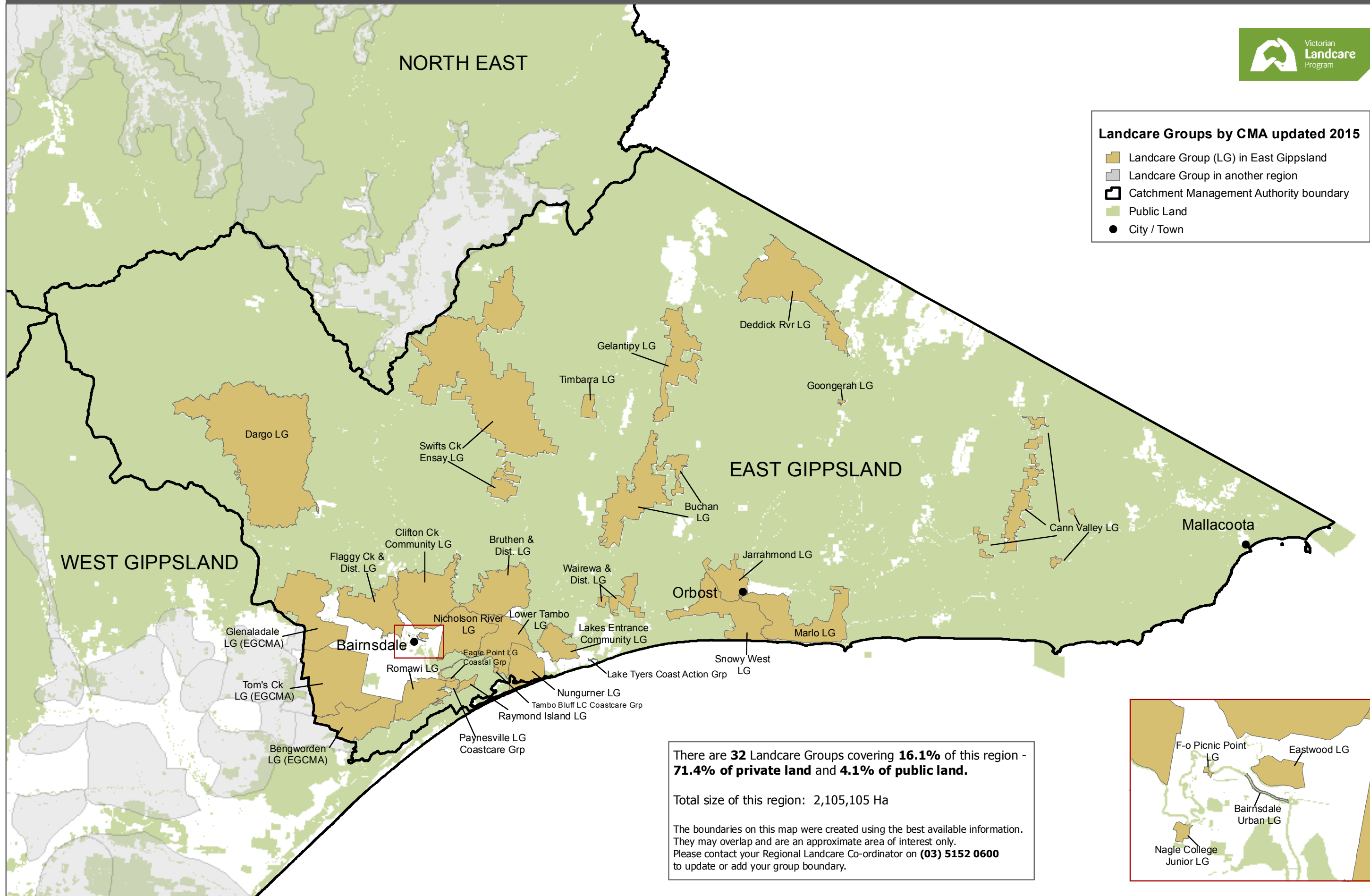


Landcare Groups in the East Gippsland region



Landcare Groups by CMA updated 2015

- Landcare Group (LG) in East Gippsland
- Landcare Group in another region
- Catchment Management Authority boundary
- Public Land
- City / Town



There are **32** Landcare Groups covering **16.1%** of this region - **71.4% of private land** and **4.1% of public land**.

Total size of this region: 2,105,105 Ha

The boundaries on this map were created using the best available information. They may overlap and are an approximate area of interest only. Please contact your Regional Landcare Co-ordinator on **(03) 5152 0600** to update or add your group boundary.



All base layers shown on this map are sourced from the DELWP Corporate Spatial Data Library from various scales. Landcare group data updated in 2014 & 2015.

